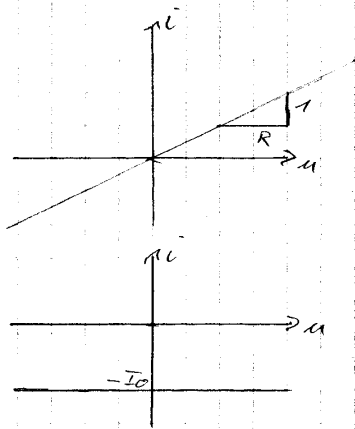
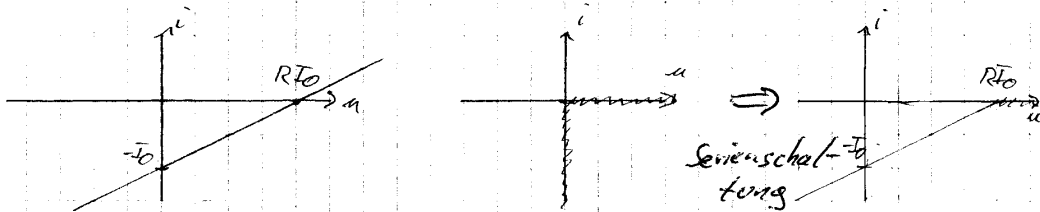


# Aufgabe 3)

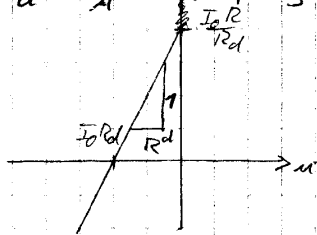
a)



↓ Parallelschaltung

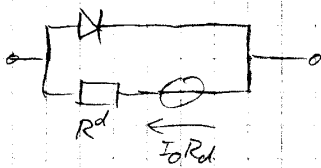


b)  $R_d = \frac{1}{\frac{1}{R} + \frac{1}{R_0}}$  ⇒ Spiegelung an der WH  $I_{1155}$



mit  $R^d = \frac{R_d^2}{R}$

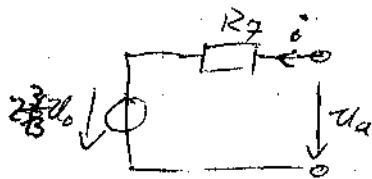
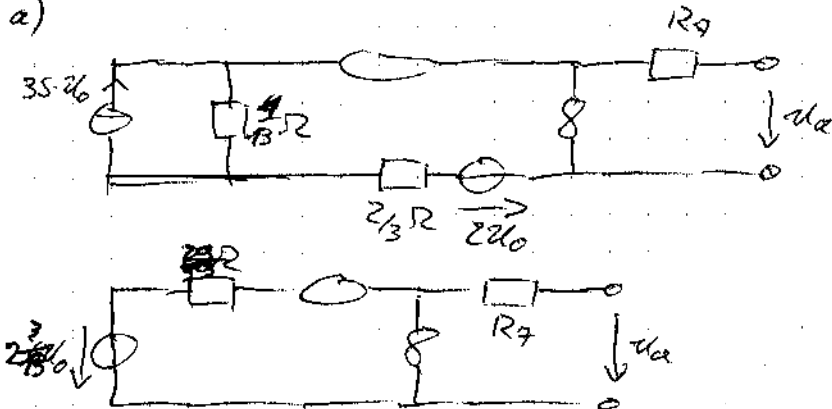
c)



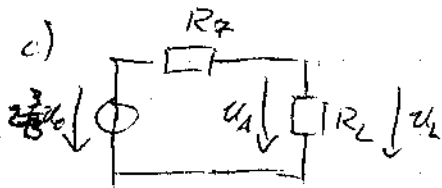
d)	Eintor	duales Eintor
	spannungsgesteuert	stromgesteuert
	aktiv	aktiv
	gepolt	gepolt
	nicht quellenfrei	nicht quellenfrei
	stückweise linear	stückweise linear

Aufgabe 4)

a)



b)  $u_a = \frac{23}{13} U_0 + R_7 i$



unbelasteter Spannungsteiler:

$$u_L = \frac{R_L}{R_7 + R_L} \cdot \frac{23}{13} U_0$$